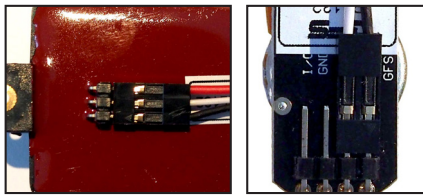


# REDactive

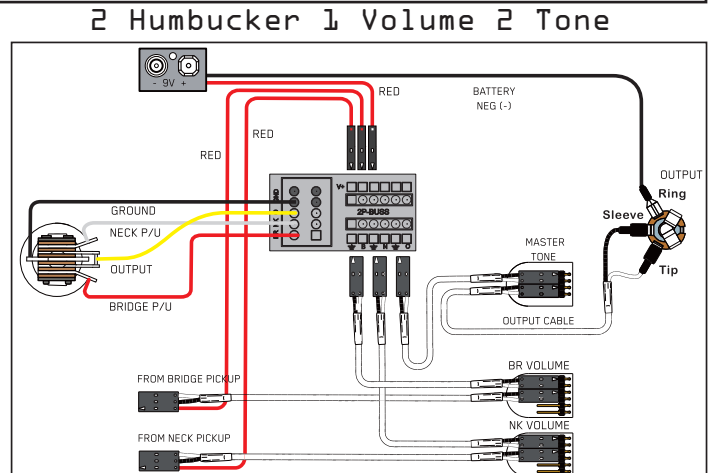
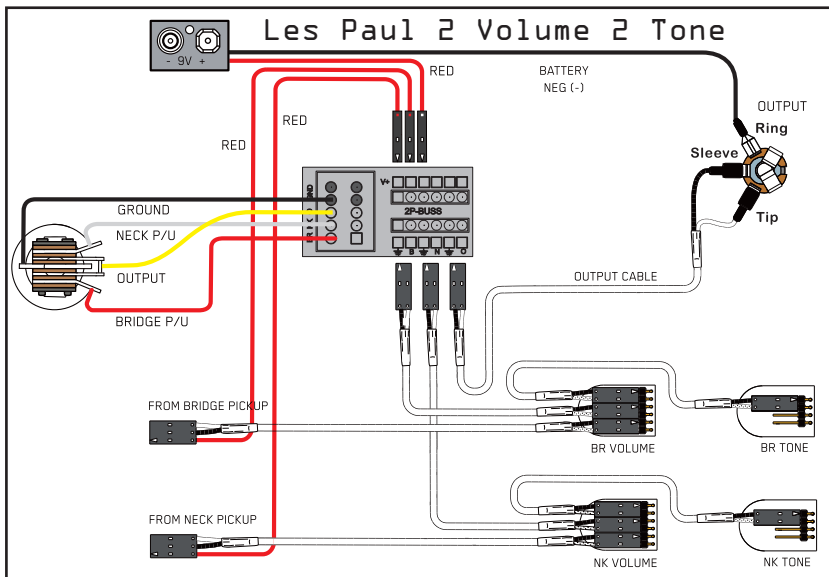
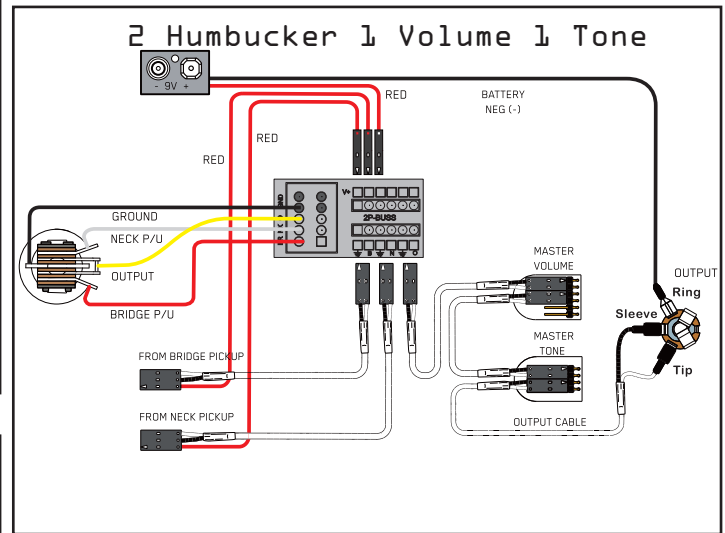
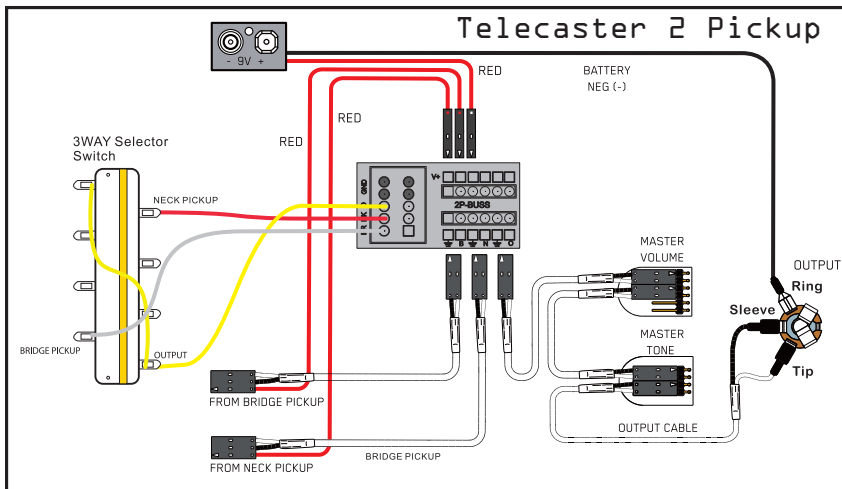
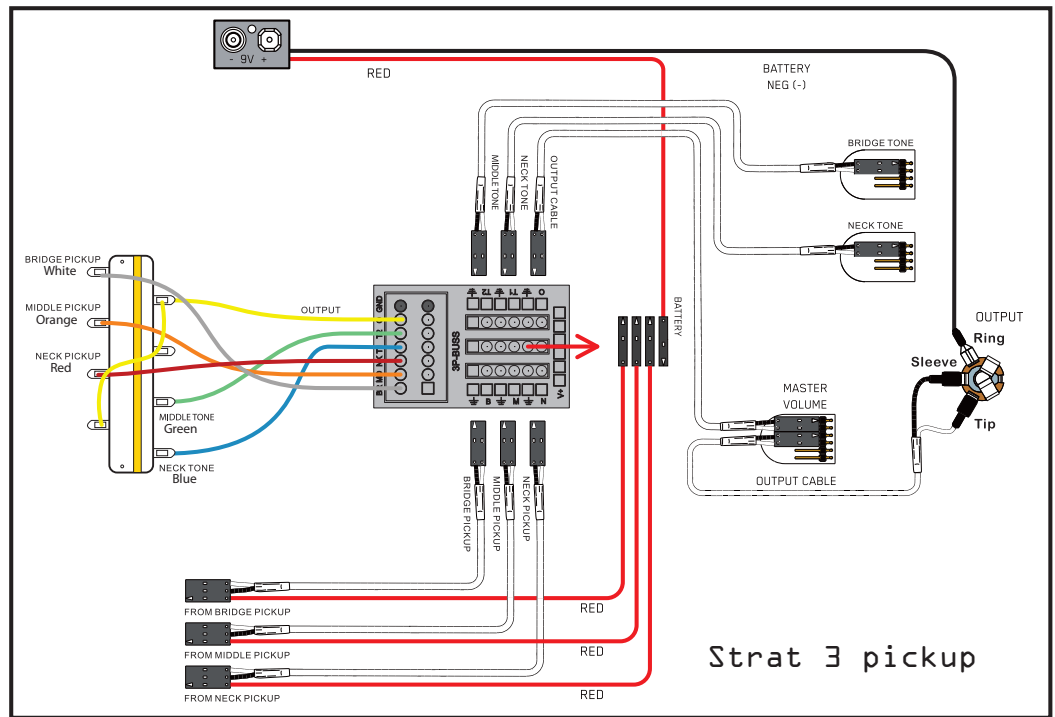
## Plug N Play Wiring Diagrams

Redactives operate on a standard 9 volt Battery. Redactives are fully shielded and thus no string ground is required. Red wires from the pickups are 9 volts + and must be connected to the red wire from the battery via any of the BUSS connectors.

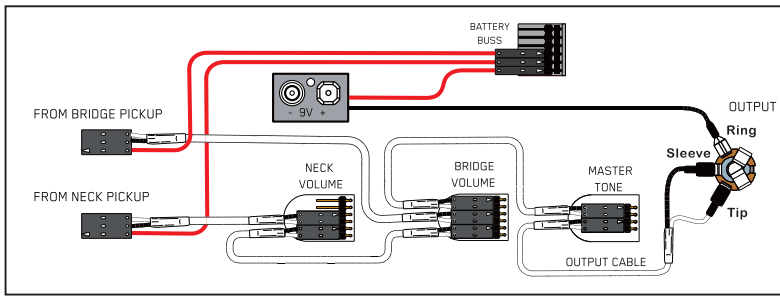
For solder installation solder all shield wired to the back of the volume pot.



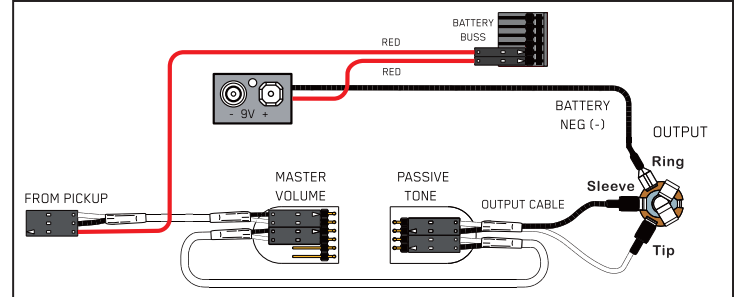
Connector plugs attach with shiny brass connectors facing UP.



### Jazz bass 2 Pickup 2 Volume, Tone



### Pbass 1 Pickup Volume, Tone



## REDactive Solder Wiring Diagrams

